

Figure 1. Lake Roberds points sampled. Point # 159 was removed from sampling because of inaccessibility.



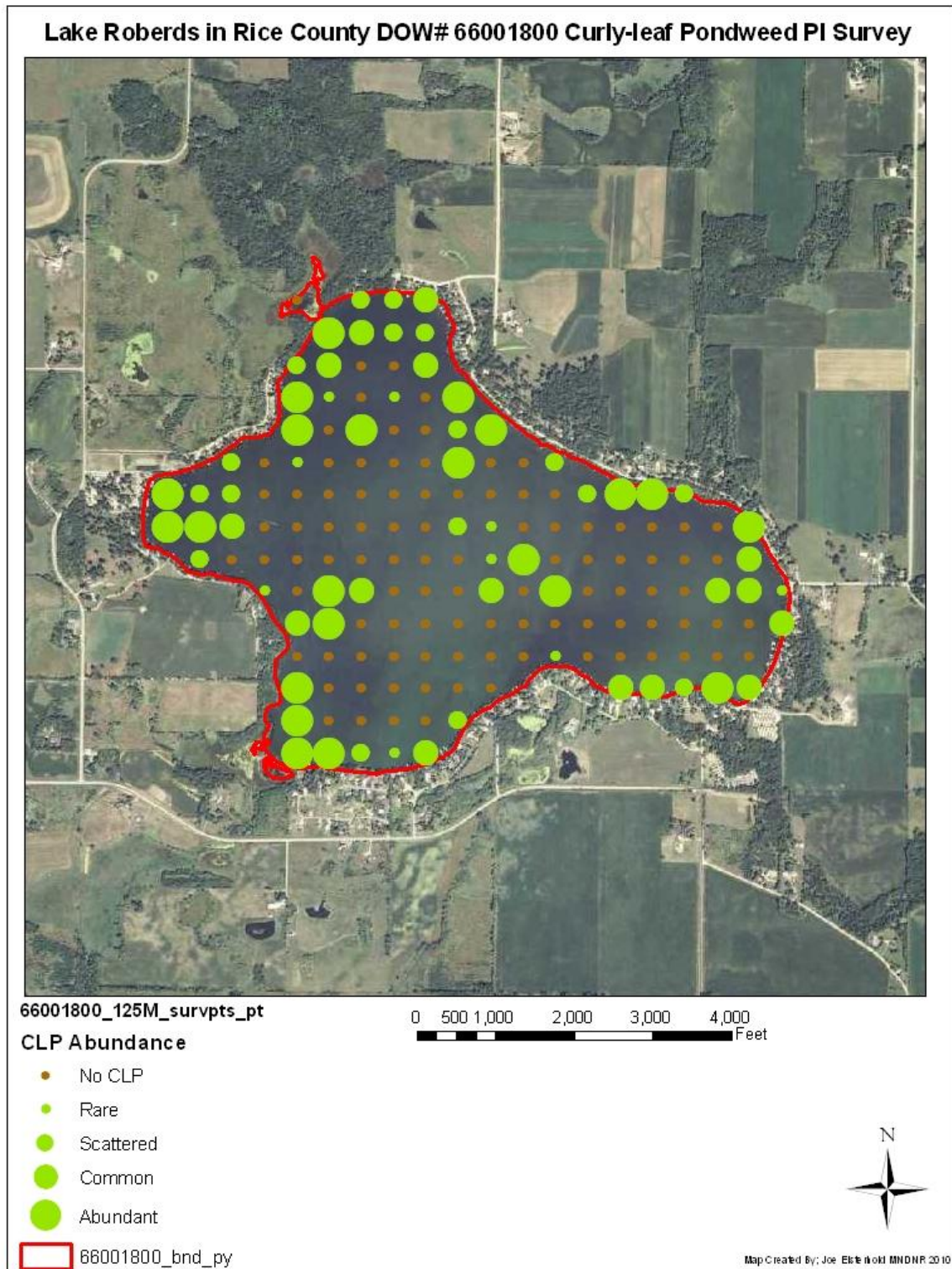


Figure 2. Abundances of Curly-leaf pondweed on June 2 & 3, 2010.

Source: FSA 2009 Color Aerial Photo and Map Created By: Joe Eisterhold MnDNR 2010.





Figure 3. Invasive Species Specialist, Joe Eisterhold with a rake full of curly-leaf pondweed.



Figure 4. Summer Intern, Lauren Beal with a full rake of curly-leaf pondweed.

Lake Roberds Point-Intercept, 2010



Figure 4. A picture of Lake Roberds along the DNR boat access. Curly-leaf pondweed has reached the surface and now occupies most of the shoreline along the lake.