



**Draft**

**Point-Intercept by the Invasive Species Program**

Division of Ecological Resources  
Minnesota Department of Natural Resources

**Lake:** Sakatah Bay

**DOW Number:** 40-0002-00

**Date of point-intercept:** 26 July 2010

**County:** Le Sueur

**Observer[s]:** Joe Eisterhold and Lauren Beal

**Time – on Water July 26:** 1015 hr

**Off water:** 1330 hr

**Type of inspection:** Point-intercept survey for curly-leaf pondweed.

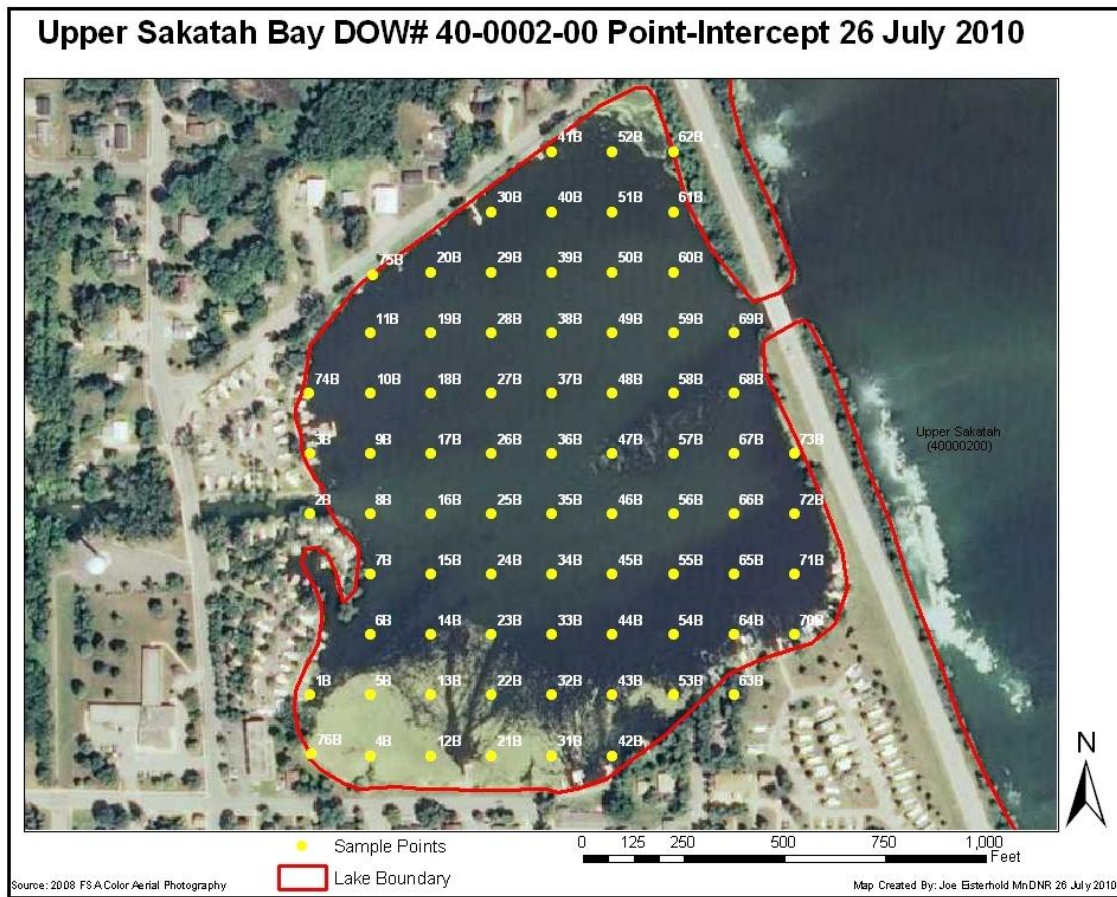
---

**Author[s]:** Lauren Beal

**Date of report:** 29 July 2010

**Overall:** Sakatah Bay is located in Le Sueur County near Waterville. The water's temperature was 77°F at 10:15 am on 26 July 2010. The Secchi Disk reading for water clarity was 2.0 feet at waypoint 35. The maximum depth of this lake is 12 feet and the maximum depth sampled with plant growth was 8 feet. Plant growth occurs at a mean depth of 4.2 feet. Our total number of points was 78, all of which were littoral in depth. Floating curly-leaf pondweed turions occurred in low densities. This bay's access is owned by the city and is located on the Cannon River, flowing into the bay.

Plant Species	Type	Percent Frequency of Occurrence
Coontail ( <i>Ceratophyllum demersum</i> )	Submersed	59%
Elodea ( <i>Elodea canadensis</i> )	Submersed	78%
Filamentous algae ( <i>Aphanizomen</i> spp. and <i>Nostos</i> spp.)	Submersed	30%
Sago Pondweed ( <i>Potamogeton pectinatus</i> )	Submersed	11%
Flatstem Pondweed ( <i>Potamogeton zosteriformes</i> )	Submersed	3%
Water Celery ( <i>Vallisneria americana</i> )	Submersed	12%
Lesser Duckweed ( <i>Lemna minor</i> )	Floating	43%
Frequency of sites with submersed native species		82%
Average number of submersed native taxa per sample site		2.29



**Figure 1.** Point intercept survey of Sakatah Bay on 26 July 2010. Curly-leaf pondweed turions were found near points 1B, and 2B.