

# E. COLI BACTERIA IN THE LITTLE CANNON WATERSHED

## GOODHUE COUNTY SWCD & CANNON RIVER WATERSHED PARTNERSHIP

In 2008 Goodhue SWCD sampled 10 tributaries to the Little Cannon River for E.coli bacteria. We wanted to find out where in the watershed the high levels of bacteria were coming from that we saw in 2007. On the enclosed map you can see the results. LC 5, LC 7, and LC 1 had safe levels of E.coli on average.

Seven tributaries had unsafe levels of E.coli on average with LC 2, LC 4, and LC 6 having the highest E.coli levels.

### Where is the Bacteria Coming From?

E.coli bacteria is found in the fecal matter (aka poop) of humans and animals. The E.coli in the Little Cannon and its tributaries is coming from nearby septic systems, feedlots, manure applied to farmland, and wild animals. You can't control wild animals, but you can control what condition your septic and/or feedlot is in and where and how manure is applied to farmland.



Last summer Goodhue SWCD staff visited each feedlot in the watershed. Each feedlot was rated based on its potential to pollute nearby streams. CRWP staff assessed the septic systems in the watershed through permit records on file with Goodhue County. Just like

### In Case You Missed It!

*Sampling by Cannon River Watershed Partnership in 2007 showed that high levels of E.coli bacteria in the Little Cannon River made it unsafe to swim in and come in contact with the water for many days of the year.*



with the feedlots, each septic system was rated based on its potential to pollute nearby streams.

### Next Steps

This summer we'll be focusing on working with feedlot owners. Feedlot owners whose feedlots have a high potential to

pollute based on our assessment will receive a feedlot self-assessment to help them look at how they can protect nearby streams from runoff from their feedlot. We'll then follow-up with them to talk about fixes and cost-share funding available. For those of you who already know you are interested in fixing your feedlot, call the Goodhue SWCD at 651-923-5286.



We'll also continue to sample the Little Cannon and its tributaries this summer for E.coli bacteria levels and determine a strategy to bring septic systems into compliance focusing on those in shoreland (within 300 feet of a stream).

**Questions? Contact Aaron Wills at Cannon River Watershed Partnership (507-786-3914) or Beau Kennedy at Goodhue County SWCD (651-923-5286 ext. 114)**

# Little Cannon River Watershed

## E.Coli Study 2008 Results

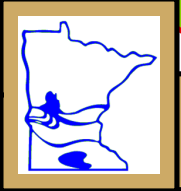
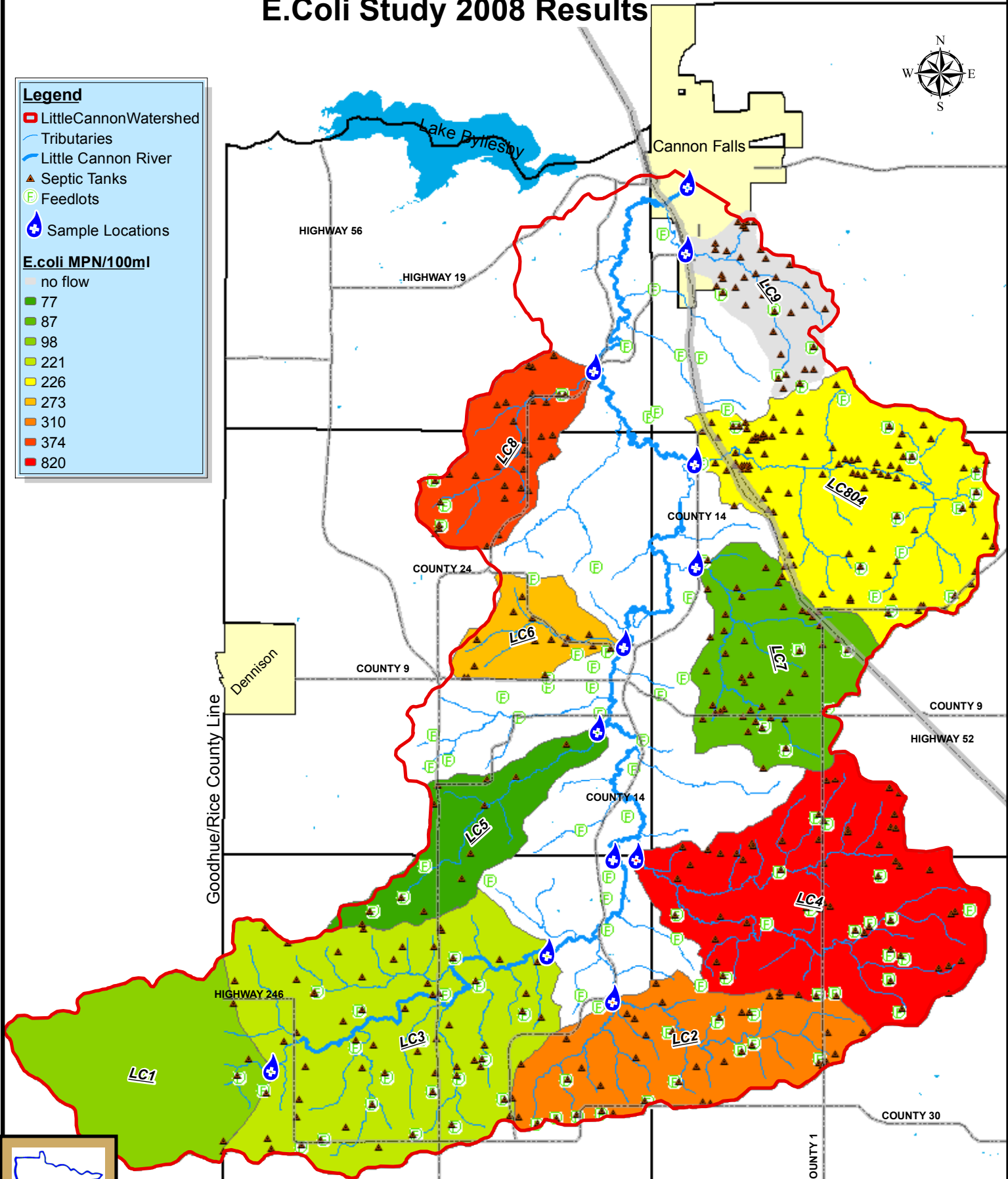


### Legend

- █ Little Cannon Watershed
- Tributaries
- Little Cannon River
- ▲ Septic Tanks
- Ⓢ Feedlots
- 💧 Sample Locations

### E.coli MPN/100ml

- no flow
- 77
- 87
- 98
- 221
- 226
- 273
- 310
- 374
- 820



Study done by Goodhue County SWCD  
 in cooperation with CRWP.  
 Please contact Beau Kennedy @ Goodhue County SWCD  
 or Aaron Wills with CRWP for more information

